

A Busy Parish



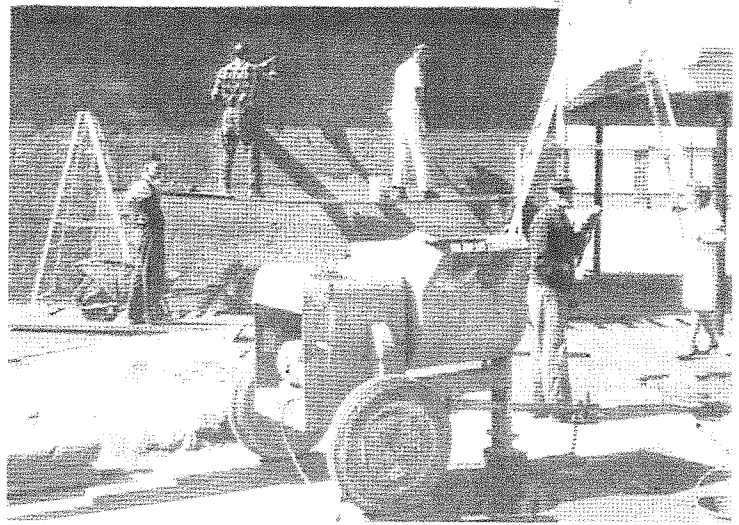
SISTER REGIS (SCHOOL PRINCIPAL AT THE TIME)
AND FATHER GORMALLY HELP GET THE NEW
CONVENT STARTED 1966.



CONVENT OPEN HOUSE



THE ORIGINAL RECTORY ONCE STOOD
WHERE THE NEW CONVENT IS NOW LOCATED.



STUCCOING THE MAY CO. 1966

A Look At The Past

THE GRASSY ROLLING HILLS OF THE SAN FERNANDO VALLEY WERE CHIEFLY USED AS CATTLE AND SHEEP RANCHES UNTIL THE NINETEENTH CENTURY. THE FRANCISCAN FATHERS CHOSE SAN FERNANDO VALLEY AS THE LOCATION OF A MISSION THAT WAS TO FILL THE GAP BETWEEN SAN BUENAVENTURA AND SAN GABRIEL.

ISAAC LANKERSHIM PURCHASED ONE-HALF OF THE ENTIRE VALLEY IN 1869, AND USED THE ACREAGE TO PLANT WHEAT. IN 1887 THE LANKERSHIM RANCH LAND AND WATER COMPANY WAS ORGANIZED BY A GROUP OF SETTLERS WHO HAD PURCHASED TWELVE THOUSAND ACRES OF LAND. THE WHEAT FIELDS TOOK A NEW LOOK. ROADS WERE CUT THROUGH THE FIELDS AND IT WAS NOW POSSIBLE TO TRAVEL DOWN LANKERSHIM BOULEVARD FOR A DISTANCE OF THREE MILES. EVEN A HOTEL WAS ERECTED. THE LANKERSHIM LAND AND WATER COMPANY HAD NOT PLANNED ON ERECTING A TOWN, BUT THE COMMUNITY CONTINUED TO GROW. THE PEOPLE WANTED TO HAVE A POST OFFICE AND IN ORDER TO FURNISH THIS THE TOWN NEEDED A NAME. IT WAS DECIDED THAT THE VILLAGE WOULD BE CALLED "TOLUCA" WHICH MEANS FERTILE VALLEY. IN THE LATTER PART OF 1887 THE SOUTHERN PACIFIC COMPANY LAID TRACKS THROUGH THE SOUTHERN PARTS OF THE VALLEY. THE RAILROAD STATION WAS NAMED LANKERSHIM MUCH TO THE DISPLEASURE OF THE PEOPLE.

AS THE YEARS WENT BY THE LARGE FARMS WERE SUBDIVIDED AND PLUMS, PEARS, PEACHES, WALNUTS AND APRICOTS WERE PLANTED. LANKERSHIM BECAME KNOWN AS THE "HOME OF THE PEACH" AND DAIRY AND POULTRY FARMS, MEAT AND WALNUT PACKING PLANTS, AND HATCHERIES WERE BUILT. WATER FOR IRRIGATION WAS A PROBLEM UNTIL THE USE OF THE GASOLINE ENGINE MADE IT POSSIBLE TO PUMP WATER. LEGAL PROCEEDINGS TOOK PLACE WHICH PREVENTED THE FARMERS FROM USING WATER FROM UNDERGROUND RESERVOIRS. THE LOS ANGELES AQUEDUCT WAS TO BE THE SOLUTION THAT WOULD SOLVE THE WATER PROBLEM. THE PROCEDURES FOR THE ANNEXATION OF LANKERSHIM TO LOS ANGELES WERE COMPLETED ON DECEMBER 29, 1923, AND WHEN THE CITY BECAME A PART OF LOS ANGELES ON AUGUST 16, 1927, THE NAME WAS CHANGED TO NORTH HOLLYWOOD.

NORTH HOLLYWOOD WAS SOON GROWING IN LEAPS AND BOUNDS, NEW STORES, BANKS AND HOMES GREETED THE VISITORS. AGAIN AND AGAIN FARMS WERE SUBDIVIDED. THE MOTION PICTURE INDUSTRY SAW THE ADVANTAGE OF THE CLIMATE CONDITIONS AND BEGAN TO MAKE PLANS. FIRST NATIONAL, UNIVERSAL AND REPUBLIC STUDIOS WERE BUILT. THIS BROUGHT AN INCREASE IN POPULATION. THE ACTORS AND OTHER EMPLOYEES OF THE MOVIE STUDIOS WANTED TO LIVE CLOSE BY. LOCKHEED AVIATION PLANT WAS ANOTHER REASON FOR RAPID GROWTH AS THE WORKERS WANTED TO LIVE NEAR THE PLANT. AS THE POPULATION GREW, THE NEED FOR MORE CHURCHES AND SCHOOLS GREW.

A PIONEERING SPIRIT

WITH THE INCREASED POPULATION THE EXISTING PARISHES OF ST. CHARLES IN NORTH HOLLYWOOD AND ST. FINBAR IN BURBANK HAD BECOME EXTREMELY OVERCROWDED. TO ALLEVIATE THE PROBLEM ARCHBISHOP J. FRANCIS MCINTYRE DECIDED THAT A NEW PARISH SHOULD BE ERECTED FOR FAMILIES FROM BOTH AREAS. FATHER JOSEPH L. BAUER WAS DIRECTED TO SELECT A SUITABLE SITE.

AFTER LOOKING AT SEVERAL LOCATIONS IT WAS DECIDED THAT THE NINE ACRE FARM COVERED BY VINEYARDS AND AN ONION FIELD ON CAHUENGA BOULEVARD WOULD BE BEST. THE SURROUNDING OPEN FIELDS WERE PURCHASED AND PLANS SET IN ACTION. UNTIL A CHURCH WOULD BE BUILT, FATHER BAUER RENTED EAGLE HALL FOR SIXTY DOLLARS A MONTH AND FOR THE NEXT FOURTEEN MONTHS MASS WAS TO BE CELEBRATED IN THE HALL. DURING THIS SAME PERIOD, CONFESSIONS WERE HEARD ON SATURDAY AFTERNOONS IN BUTZKE'S TAVERN ON CAHUENGA BOULEVARD.

IT WAS A HOT SUNDAY AT THE END OF JULY WHEN FATHER HARRY MEADE OF ST. CHARLES ANNOUNCED THAT THE NEW PARISH OF ST. PATRICK'S HAD BEEN ESTABLISHED TO INCLUDE ALL THE

SOUTHERN PACIFIC TRACKS ON THE NORTH, HOLLYWOOD WAY ON THE EAST, BURBANK BOULEVARD ON THE SOUTH AND LAUREL CANYON ON THE WEST. A SIMILAR ANNOUNCEMENT WAS MADE IN ST. FINBAR'S PARISH. BOTH PARISHES ENCOURAGED THEIR PARISHIONERS TO ASSIST AT THE MASS IN THEIR NEW PARISH, EVEN THOUGH A CHURCH HAD NOT YET BEEN BUILT. THE EAGLE'S HALL WAS NOT VERY LARGE AND MOST OF THE PEOPLE DECIDED TO WAIT FOR THE ERECTION OF THE NEW CHURCH. FATHER JOSEPH BAUER CELEBRATED HIS FIRST MASS OF THE PARISH AT EAGLE'S HALL ON THE FIRST SUNDAY OF AUGUST, 1948, SERVED BY THE LATE MICHAEL MANGUS. ABOUT SIX HUNDRED FAMILIES ATTENDED MASS ON THAT DAY. DURING THE FOURTEEN MONTHS OF MASS AT EAGLE'S HALL THIS WAS THE AVERAGE NUMBER OF FAMILIES WHO ASSISTED AT THE MASSES AND SUPPORTED THEIR NEW PARISH. THE FOLLOWING MONTHS PASSED SWIFTLY DUE TO THE MANY CONCERNS OF THE NEW BUILDING.

THE SPIRITUAL NEEDS OF THE PEOPLE DURING THESE PIONEERING DAYS WERE NOT OVERLOOKED. BAPTISMS, MARRIAGES AND FUNERALS TOOK PLACE. AUGUST 15, 1948 WAS THE DATE OF THE FIRST BAPTISM. BETWEEN THIS DATE AND AUGUST 25, 1964, TWO THOUSAND NINE HUNDRED AND SIXTY-EIGHT BAPTISMS WERE PERFORMED. THE FIRST MARRIAGE IN THE PARISH TOOK PLACE ON SEPTEMBER 11, 1948. COSMO FORGIA MARRIED CATHERINE TERESA ODORGER. SINCE THIS FIRST MARRIAGE THERE HAVE BEEN FIVE HUNDRED AND NINETY FOUR COUPLES MARRIED AT ST. PATRICK'S. MRS. MARTHA BONNIFIELD WAS BURIED FROM ST. PATRICK'S PARISH ON AUGUST 30, 1948. SHE WAS THE FIRST OF FOUR HUNDRED AND EIGHTY SEVEN TO BE BURIED FROM THE PARISH.

THE OLD FARM HOUSE THAT HAD BEEN ON THE PROPERTY WAS RENOVATED INSIDE AND BECAME THE RECTORY. WHEN THIS JOB WAS COMPLETED FATHER BAUER MOVED IN WITH HIS ASSISTANT, FATHER CYRIL NAVIN.

TIME MARCHED ON AND THE DAY FINALLY CAME WHEN FATHER BAUER WAS HAPPY TO ANNOUNCE THAT THE FIRST MASS IN THE NEW CHURCH WOULD BE CELEBRATED ON OCTOBER 30, 1949. PRIDE FILLED THE HEARTS OF THOSE WHO HAD SPENT THE LAST FOURTEEN MONTHS AT THE HALL, WHEN THEY SAW THEIR PASTOR COME OUT TO CELEBRATE MASS IN A REAL SANCTUARY AND GIVE HIS SERMON FROM A PULPIT.

CONTINUATION OF GROWTH

ACTIVITY DID NOT CEASE WHEN THE NEW CHURCH WAS COMPLETED FOR PLANS WERE IN THE MAKING FOR A MUCH NEEDED SCHOOL. THIS PROJECT WAS VERY DEAR TO FATHER BAUER'S HEART AND GREAT CARE WENT INTO THE PLANNING AND GREAT ENTHUSIASM WENT INTO THE FUND RAISING CAMPAIGN. THE BUILDING OF THE SCHOOL WAS BEGUN. THE SAME ARCHITECTS AND CONTRACTORS WERE HIRED AND THE SCHOOL WAS BUILT OF THE SAME MATERIALS AS THE NEW CHURCH. THE NEW SCHOOL WAS LOCATED ON CAHUENGA BOULEVARD AND ERWIN STREET AND HAD CLASSROOM FACILITIES FOR EIGHT GRADES. BESIDES THE EIGHT CLASSROOMS THERE WAS A SCHOOL HALL AND A FACULTY ROOM FOR THE RELIGIOUS. THE FACULTY ROOM WAS NECESSARY AS THERE WERE NO PLANS FOR A CONVENT. THE RELIGIOUS OF THE SACRED HEART OF MARY WERE ASKED TO STAFF THE NEW SCHOOL. SCHOOL OPENED LATE THAT FIRST YEAR BECAUSE THE BUILDERS HAD NOT COMPLETED THEIR WORK. ON SEPTEMBER 27, 1950, THE SCHOOL WAS OPENED BY MOTHER WILFRED, R. S. H. M., THE NEW PRINCIPAL OF ST. PATRICK'S SCHOOL. GRADES ONE THROUGH SEVEN COMMENCED ON THAT DAY, AND WITH MOTHER WILFRED CAME SIX OTHER NUNS AND A LAY TEACHER, MRS. VELMA HARVEY. HOW FATHER BAUER'S HEART FILLED WITH JOY AS HE STOOD AT ATTENTION IN THE SCHOOL YARD FOR THE FIRST FLAG SALUTE, AND GAZED OUT OVER THE EAGER YOUNG FACES.

THE PEOPLE LOVED THEIR PARISH AND THEIR PASTOR, AND WERE ALWAYS WILLING TO UNDERTAKE A PROJECT. FATHER BAUER ASKED THE HOLY NAME SOCIETY TO THINK OF A GOOD MONEY RAISING PROJECT TO HELP MEET THE INTEREST PAYMENTS ON THE NEW CHURCH AND SCHOOL, AND THE MEN DECIDED ON A BARBECUE. THE FIRST BARBECUE WAS HELD IN 1951. BUTZKE'S HOUSE WAS USED TO PREPARE THE MEAT, AND THE EVENT WAS SUCH A SUCCESS THAT IT WAS DECIDED TO MAKE IT AN ANNUAL EVENT.

TIME PASSED AND THE PARISH AND SCHOOL GREW. IN 1953, THE PARISH WAS HONORED BY THE PRESENCE OF HIS EMINENCE JAMES FRANCIS CARDINAL MCINTYRE. IT WAS A FIRST FOR BOTH THE

CARDINAL AND THE SCHOOL; THE FIRST CONFIRMATION HIS EMINENCE HAD PRESIDED OVER AS A CARDINAL, AND THE FIRST CONFIRMATION FOR THE CHILDREN ATTENDING ST. PATRICK'S SCHOOL. AFTER THE CEREMONY THE CARDINAL AND OTHER VISITING PRIESTS WERE SERVED DINNER IN THE SCHOOL HALL.

BY NOW, THE PARISH SURROUNDINGS HAD TAKEN ON A NEW LOOK. HOUSES, DUPLEXES, AND APARTMENTS HAD SPRUNG UP IN THE PLACE OF OPEN FARMLAND. IT WAS NOT LONG BEFORE THE LARGE LOT ACROSS THE STREET FROM THE SCHOOL WOULD HAVE HOUSES ON IT. THIS IS WHAT THE PEOPLE OF THE PARISH THOUGHT, BUT FATHER BAUER HAD OTHER PLANS FOR THAT LOT, AND PURCHASED THE LOT FOR THE TIME WHEN THE NEW LARGER ST. PATRICK'S CHURCH WOULD BE NEEDED.

DURING THE SUMMER OF 1960, THE MEN OF THE PARISH WERE BUSY. AFTER THEIR DAYS WORK THEY WOULD COME OVER TO THE SCHOOL YARD WITH DRILLS, BOLTS, LONG METAL PIPES, PAINT BRUSHES AND ALL THE THINGS NEEDED TO BUILD A COVERING FOR THE LUNCH TABLES. THE MEN WORKED HARD ALL SUMMER LONG ON THE SHADE PAVILLION. WHEN THE WORK WAS DONE THE SHADED AREA WAS A CREDIT TO THEIR LONG HARD WORK AND SKILL.

IN THE FALL OF 1960, IT WAS REALIZED THAT AN ADDITION WAS NEEDED TO MEET THE EVER GROWING NEEDS OF THE PARISH. FIRST CAME THE MEN WITH THEIR HAMMERS AND SAWS AND SLOWLY AT FIRST, THE FOUNDATION FOR THE NEW SCHOOL BUILDING CONSISTING OF FOUR CLASSROOMS WAS LAID. THIS NEW BUILDING LIKE THE REST OF THE PARISH PLAN WAS TO BE BUILT OF NORMAN BRICK. THE WALLS ROSE AS THE WORKMEN LAID BRICK UPON BRICK AND DURING THE SUMMER OF 1961, THE NEW BUILDING WAS COMPLETED AND IN SEPTEMBER IT WAS OCCUPIED BY THE YOUNGER GRADES.

JOY MINGLED WITH SORROW

TO THE GREAT JOY OF THE PEOPLE, IT WAS ANNOUNCED BY HIS EMINENCE JAMES FRANCIS CARDINAL MCINTYRE, THAT SEVERAL OF THE PASTORS IN THE ARCHDIOCESE OF LOS ANGELES HAD BEEN MADE MONSIGNORS. FATHER JOSEPH L. BAUER WAS AMONG THIS GROUP. THE PEOPLE OF THE PARISH BEGAN TO MAKE PLANS FOR THE GREAT CELEBRATION OF THE INVESTITURE. AS APRIL 1, 1962, APPROACHED, INVITATIONS WERE SENT OUT. BISHOP TIMOTHY MANNING, A LONG TIME FRIEND OF FATHER BAUER, PRESIDED AT THE CEREMONY. THERE WERE ABOUT TWENTY-FIVE OTHER PRIESTS PRESENT AND THE CHURCH WAS FILLED TO CAPACITY WITH RELIGIOUS AND PARISHIONERS.

AFTER THE EXCITEMENT, THE PARISH SETTLED BACK TO ITS NORMAL ROUTINE. THE YEAR WENT BY QUICKLY AND WHEN MONSIGNOR BAUER WENT TO THE HOSPITAL IN MAY, NO ONE WAS OVERLY CONCERNED. HE HAD GONE THERE BEFORE AND EACH TIME THE DOCTOR ORDERED REST BUT NOT MUCH ELSE, MONSIGNOR WAS IN THE HOSPITAL A LITTLE OVER A WEEK WHEN ON MEMORIAL DAY, MAY 30, 1963, THE DOCTOR PHONED FATHER NAVIN, THE ASSISTANT, TO SAY THAT MONSIGNOR BAUER HAD JUST DIED. THE PARISH WAS SHOCKED AND EXCEEDINGLY SADDENED BY THE LOSS OF THEIR BELOVED PASTOR. IT WAS WITH HEAVY HEARTS THAT THE PARISH GATHERED TOGETHER ON JUNE 3, 1963, FOR THE FUNERAL OF THE RIGHT REVEREND JOSEPH L. BAUER, WHO WAS BURIED IN CALVARY CEMETERY.

FATHER MICHAEL GORMALLY WHO HAD BEEN THE ASSISTANT AT SACRED HEART PARISH IN LOS ANGELES, WAS MADE THE NEW PASTOR OF ST. PATRICK'S PARISH AND FATHER COLM O'RYAN WAS NAMED ASSISTANT. THE FORMER ASSISTANT, FATHER NAVIN WAS CHANGED TO ST. LUCY'S PARISH IN LONG BEACH.

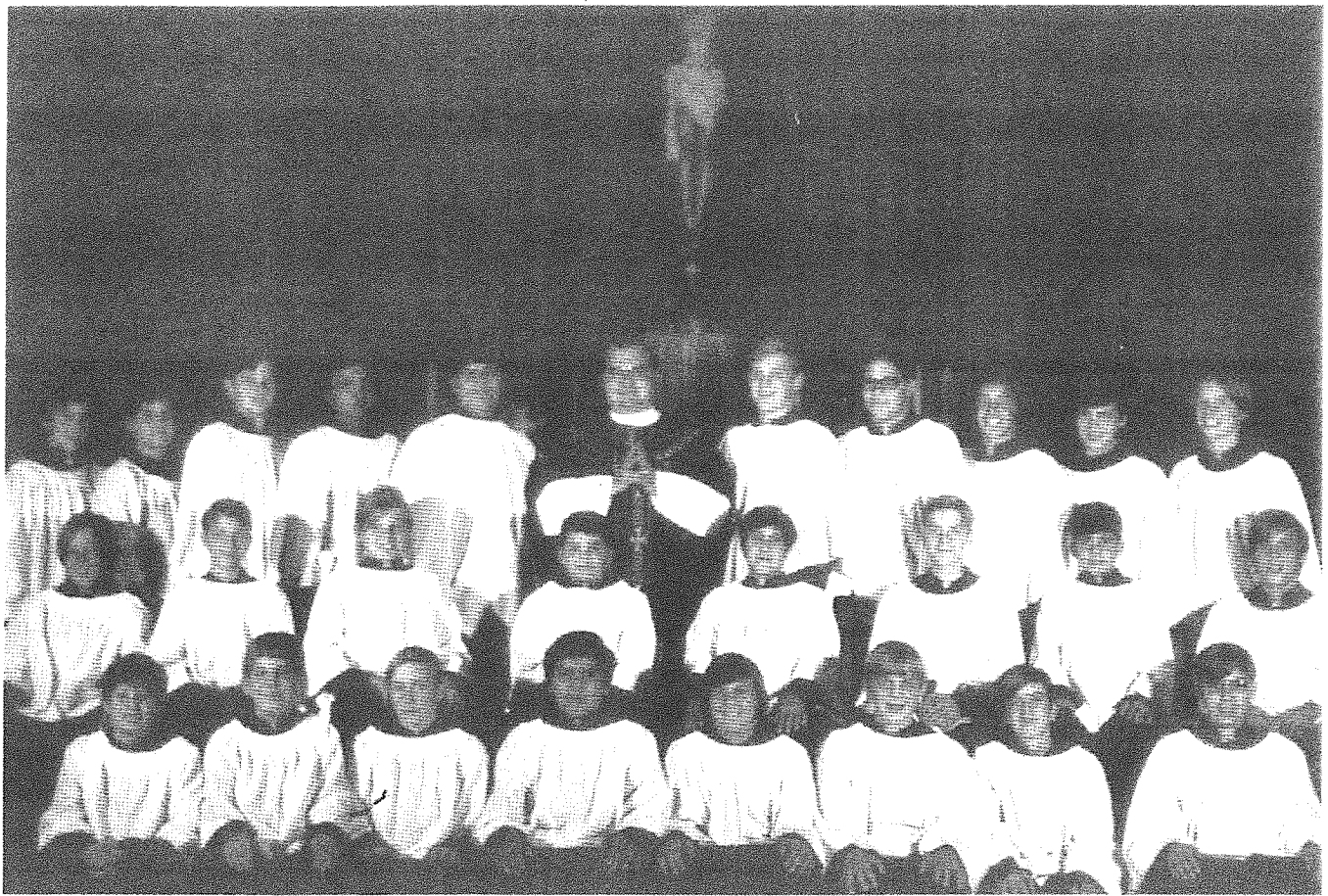
BEFORE MONSIGNOR'S DEATH, PLANS HAD BEEN MADE FOR A NEW RECTORY TO BE BUILT ON THE CORNER OF WILLOWCREST AND ERWIN.

FATHER GORMALLY WANTED THE INTERIOR OF THE CHURCH PAINTED AND A FEW OF THE MEN OF THE PARISH CAME OVER NIGHT AFTER NIGHT JUST BEFORE THE CLOSE OF THE SCHOOL YEAR AND PAINTED THE ENTIRE AREA.

MONSIGNOR BAUER HAD A GREAT LOVE FOR THE BLESSED MOTHER AND IT WAS DECIDED BY BISHOP

MANNING AND FATHER GORMALLY TO ERECT AN OUTDOOR SHRINE TO OUR LADY OF GRACE IN HIS HONOR. THIS SHRINE IS LOCATED NEXT TO THE FLAG POLE ON THE SCHOOL GROUNDS.

ST. PATRICK'S PARISH IS TWENTY-FIVE YEARS OLD AND IT IS STILL GROWING RAPIDLY. IT IS A PARISH MADE UP OF PRIESTS TOTALLY DEDICATED TO THEIR PARISHIONERS AND PARISHIONERS WHO ESTEEM THEIR PRIESTS.

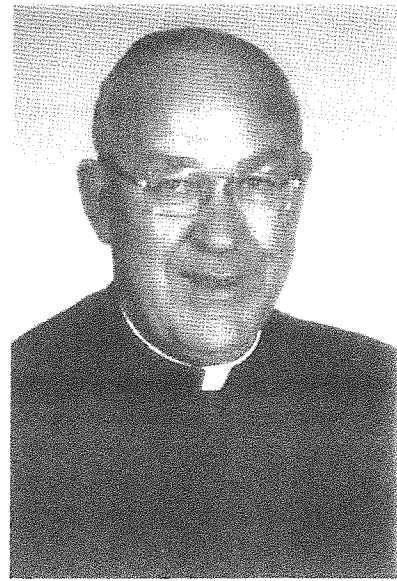
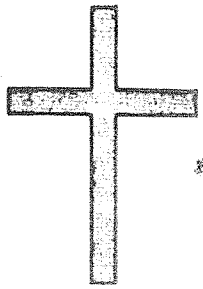


ALTAR BOYS UNDER THE SUPERVISION OF FATHER LESER

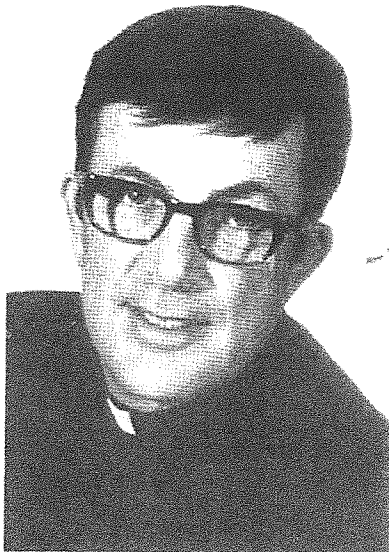
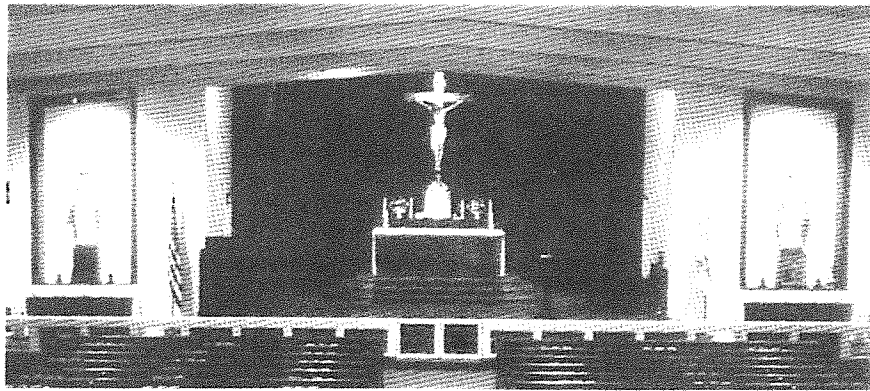




MONSIGNOR JOSEPH L. BAUER
FIRST PASTOR



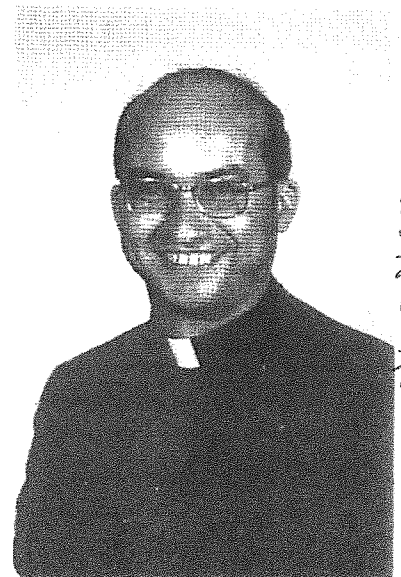
FATHER MICHAEL GORMALLY
PRESENT PASTOR



FATHER
PHILIP McGRATH



FATHER
WILLIAM J. LESER



FATHER
WILHELM MÜLLER

Wilhelm R. Müller S.V.D.

彌
維
禮
三
神
父